

Playscape Design

Arlene Soto & Madison McGraw

Holistic and Sustainable Design - Fall 2016



Rock Climbing and Slides



Crazy Slides



Peaceful Rock Garden



Built Structures



Interactive Water Play



Trampolines

*“A creative playground
is only half a creative space;
it’s also a creative attitude.
And we’re changing attitudes
as much as we’re changing spaces.”
— Jay Beckwith, 1973*

Concepts - Research - Playscape Design

Forts



Slides



Climbing Structures

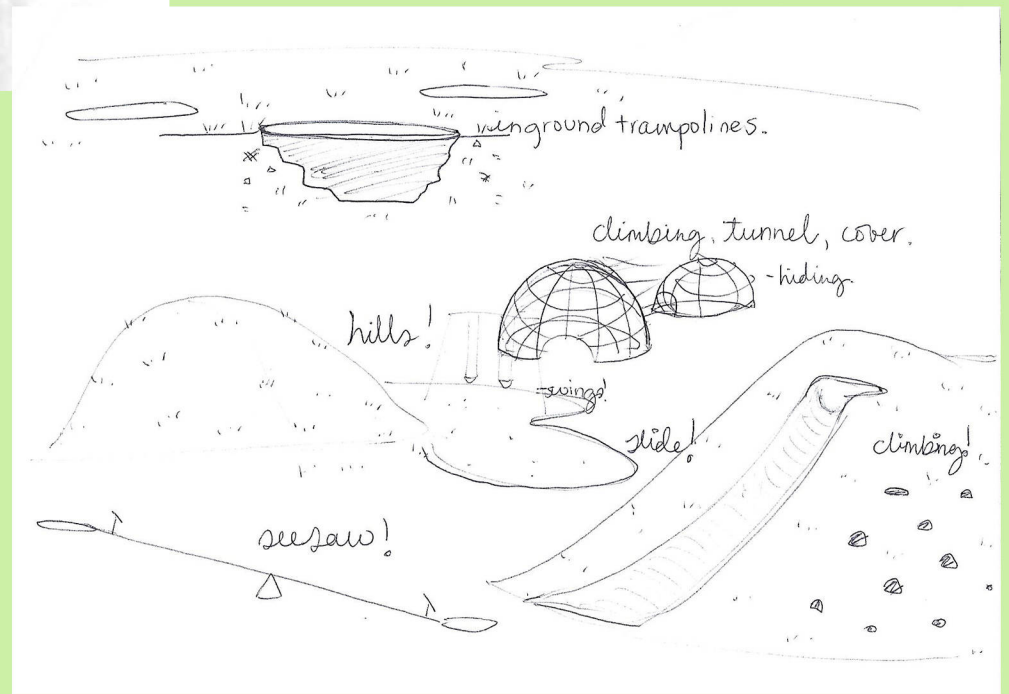
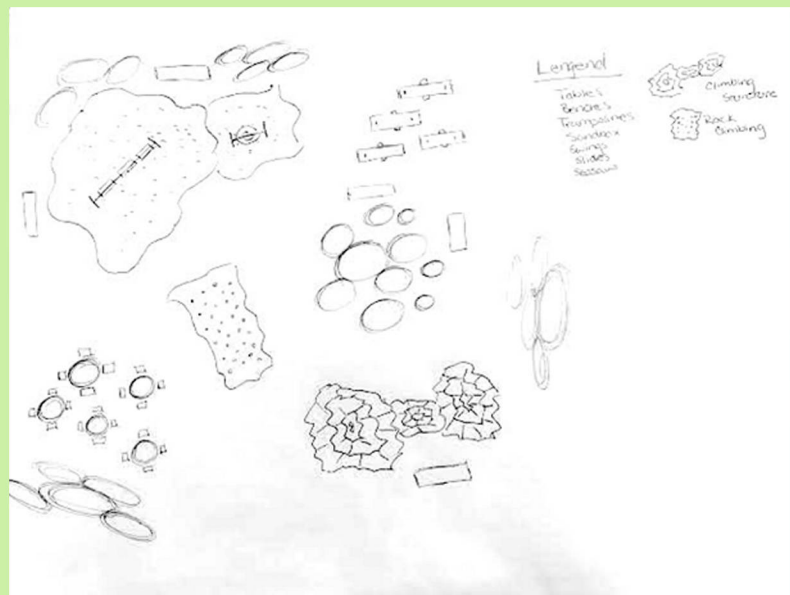
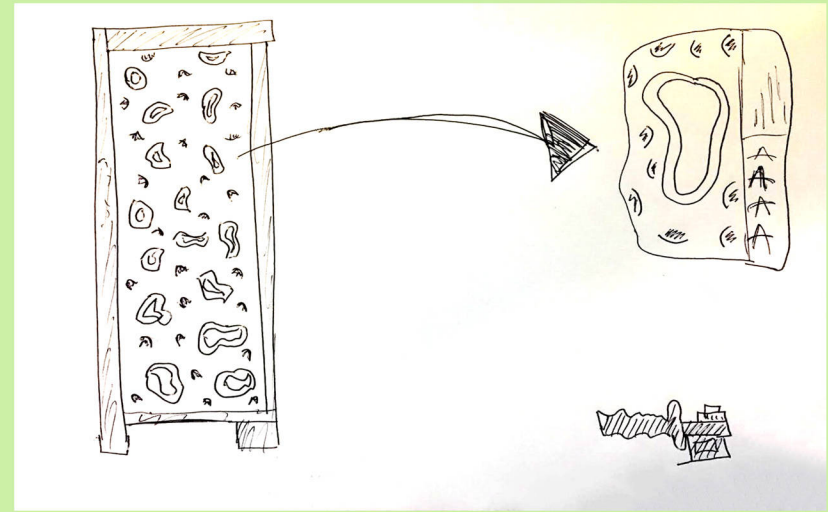
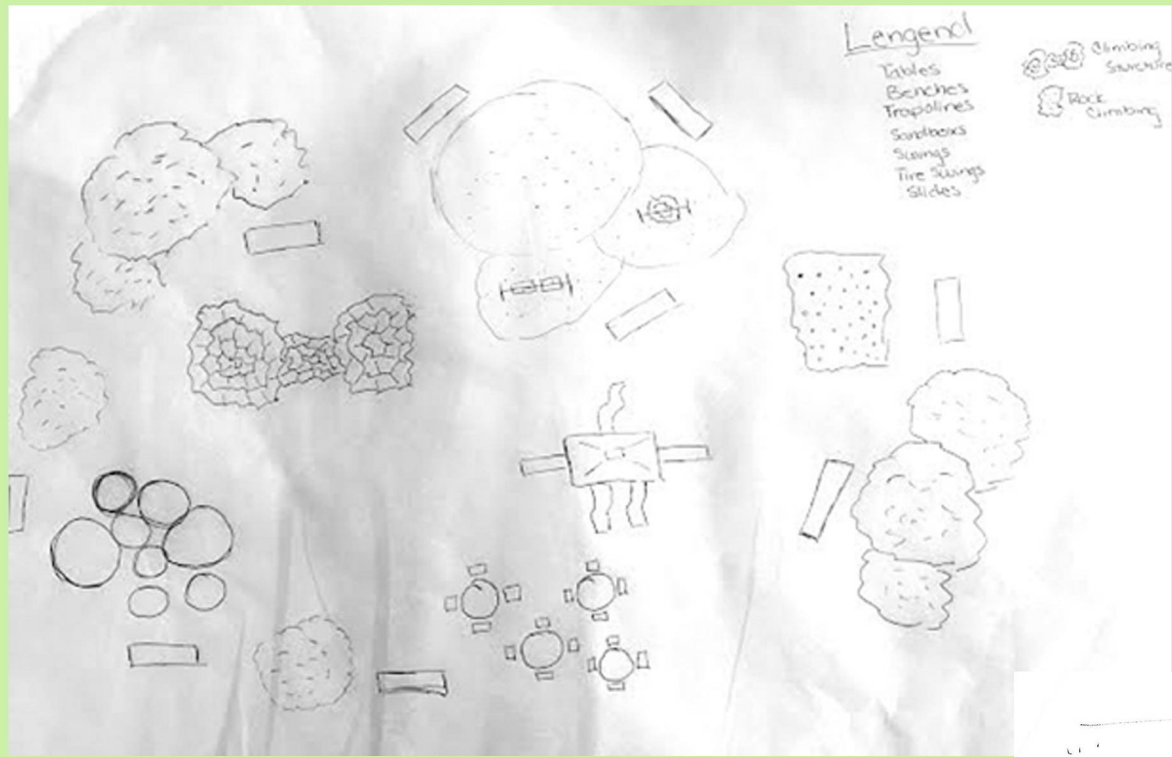
When thinking about different areas for play, taking into consideration the things that children like to do is top priority. We have determined that according to their respective age groups children will gravitate toward different activities.

Younger children that require more assistance will wander around and attempt to climb things if they are not being pushed on the swings by a parent.

The older the child the more adventurous and they will climb and run, taking full advantage of the built environment and open space.

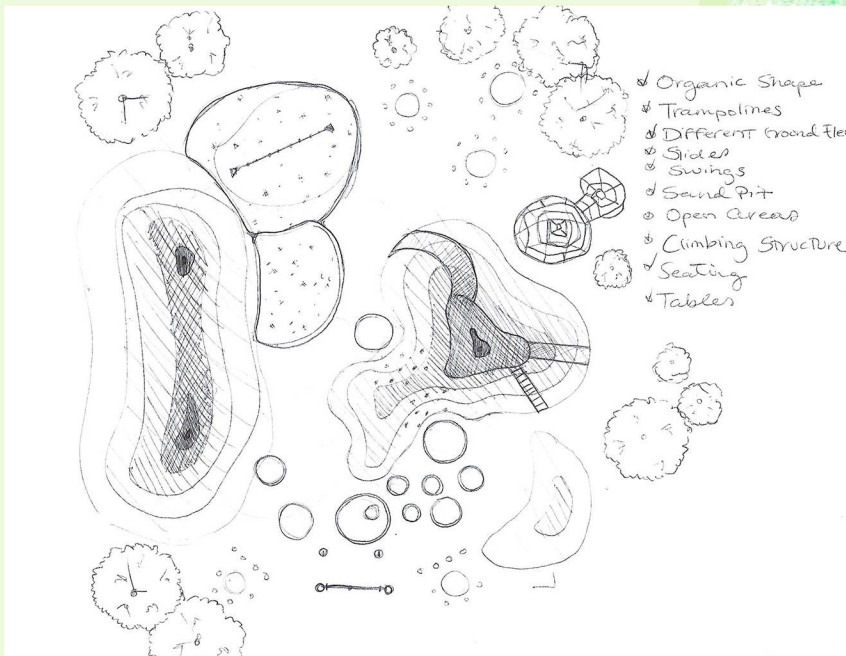
Seating is also a vital part of any playground, this gives parents and guardians the option to sit and supervise as well as offering a comfortable area to gather together to eat and socialize.

Concepts - Research - Playscape Design



Preliminary Sketches- Playscape Design

Open areas are conducive to active play and when there are activities scattered about this promotes positive and constructive distractions. Having interactive elements that allow children to expend energy in a positive way are pivotal for physical and mental development.



Concepts - Perspective View - Playscape Design

Concept 1: Slides.

Slides are a staple of any playground. This activity promotes climbing while being a fun experience in a change of elevation. Children of all ages well into adulthood can appreciate a slide. It also promotes taking turns which involves participation and interaction between children.

Concept 2: Natural Elements.

Setting up dedicated areas to interact and use all 5 senses while fully immersed in different elements. Creating fun waterscapes, a sand pit where kids can dig and build, and large grassy areas that really bring nature into a built environment.

Concept 3: Change in Elevations and Built Structures.

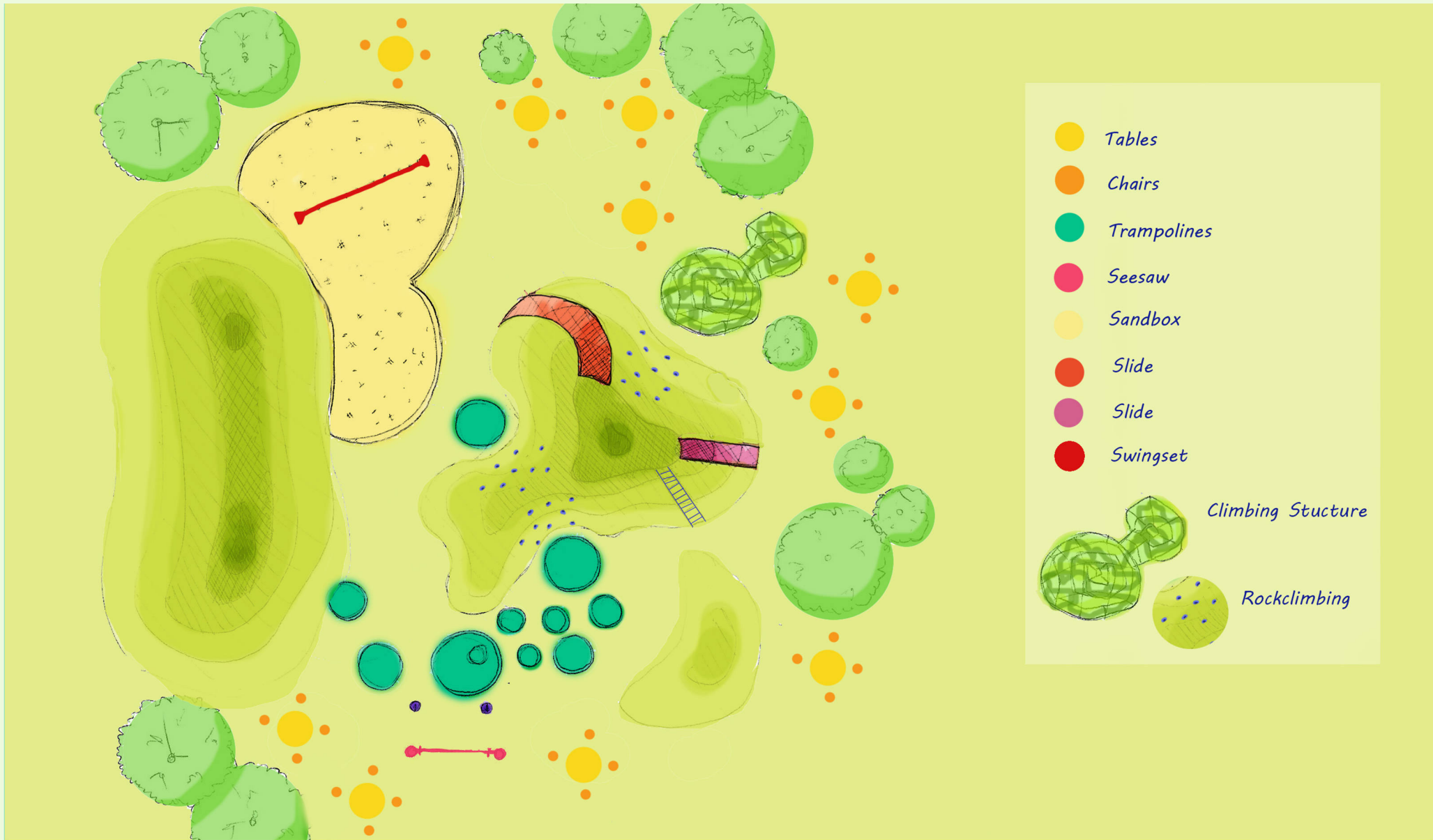
Most appealing to our group is the idea of a change in elevation. This can be accomplished not only with hills, slides and swingsets but also with jumping. Trampolines are one of the most active and fun activities for kids.

FINAL CONCEPT: FULLY INCORPORATED DESIGN

Incorporating many different elements into our final design is how we are creating a fun, interactive, and constructive playscape. Incorporating large hills allows us to create built in rock-climbing structures as well as slides into the sides. A swingset in a sandpit is a staple of most playgrounds and it is something that we do not wish to eliminate from our playscape. Including built structures that can be climbed as well as mimic nature are also pivotal to create a cohesive environment for interactive play.

Constructive play is a major factor in development and plays a huge role in making a play area perfect for all ages. Making sure to connect with nature and outside environments are a key point in not only toddlers but also young adults. Making a play area have ranges from funky slides, swings, rock climbing and trampolines make for lasting memories that each child can hold onto. Making sure there is also foliage in the natural landscape in the form of trees, bushes, and grass brings the nature into play without making it seem like a park but a place to escape and have fun. This area brings in all those aspects while also giving parents places to sit and enjoy their time with their growing children.

Concepts - Playscape Design



Final Design - Playscape Design

Stewart, M·Ed· Deborah J., Cindy Says, Ann @ My Nearest and Dearest Says, Meri Cherry Says, Sara Says, Jode@mummymusingsandmayhem Says, Debra Says, Ina Lungeanu Says, Bianca Says, Catherine Flock Says, Sanam Says, and Mands Says· "Deborah J· Stewart, M·Ed·" Teach Preschool· Deborah Stewart, 10 May 2014· Web· 29 Sept· 2016·

By Doing So, This Event Will Be Independent of the Recurring Set of Events· "History Category All - Playscapes·" Playscapes· N·p·, n·d· Web· 29 Sept· 2016·

"Adventure Playgrounds - Earthplay·" Earthplay· N·p·, n·d· Web· 29 Sept· 2016·

By Designing Play Spaces to Match the Children's Developmental Play Patterns, and by Building in Increasing Levels of Difficulty for Their· "Play & Playground Encyclopedia·" Play & Playground Encyclopedia· N·p·, n·d· Web· 29 Sept· 2016·

Works Cited- Playscape Design